

Jet-Air
Cool, Warm & Collected



18~24K

36K

48~60K

www.jet-air.co.za

Due to **JASA** policy of constant improvement, specifications are subject to change without prior notice.

Remarks: Cooling capacities are based on indoor air temp. 27°C DB, 19°C WB and outdoor air temp. 35°C DB, 24°C WB. The above specifications are subject to change without prior notice for product improvement.

E.&O.E.



- Fresh Air Intake
- Silent
- Auto Restart Function
- Self-diagnosis Function
- Sleep Mode

Jet-Air
Cool, Warm & Collected

Ducted Fixed Speed

R410A



Proudly distributed by

JASA
Smart Home

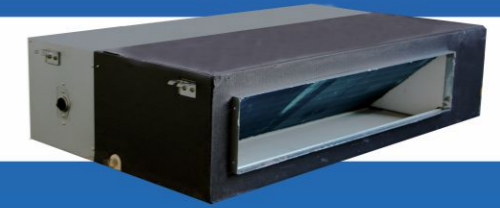
Johannesburg (011)708 1148
Pretoria (012)752 8777
East Rand (011)823 2119
Cape Town (021)823 8866

Durban (031)577 0498
Nelspruit (013)752 3258
Port Elizabeth (041)364 0947
Botswana (00267)262 2909



Ducted Fixed Speed

Technical Specifications



Model	Indoor		JASA-Hi-H12A4/R	JASA-Hi-H18A4/R	JASA-Hi-H24A4/R	JASA-Hi-H36A4/R	JASA-Hi-H36A5/R	JASA-Hi-H48A5/R	JASA-Hi-H60A5/R
	Outdoor		JASA-H12A4/R	JASA-H18A4/R	JASA-H24A4/R	JASA-H36A4/R	JASA-H36A5/R	JASA-H48A5/R	JASA-H60A5/R
Power Supply	V~,Hz,Ph		220~240,50,1	220~240,50,1	220~240,50,1	220~240,50,1	380~415,50,3	380~415,50,3	380~415,50,3
Capacity	Cooling		Btu/h 12000	18000	24000	36000	36000	48000	60000
	Heating		Btu/h 12750	19100	26900	39920	39920	53057	63500
Electric Data	Rated Cooling Power Input		kw 1.14	1.7	2.26	3.77	3.77	4.85	6.26
	Rated Heating Power Input		kw 1.15	1.55	2.18	3.50	3.50	4.80	5.78
	Rated Cooling Current		A 5.32	7.80	10.37	17.30	6.76	9.10	11.34
	Rated Heating Current		A 5.60	7.11	10.00	16.60	6.28	9.00	10.36
Performance	EER/COP		w/w 3.08/3.24	3.10/3.61	3.11/3.61	2.81/3.34	2.81/3.34	2.90/3.24	2.60/3.20
Indoor Unit	Indoor Air Flow (Hi/Mi/Lo)		m ³ /h 613/513/433/388	950/760/665	1400/1250/1050	2000/1600/1400	2000/1600/1400	2400/2100/1700	2600/2300/1950
	Noise Level(Hi/Mi/Lo)		dB(A) 39/37/33/29	38/35/32	46/44/42	50/47/41	50/47/41	50/46/44	50/47/45
	External Static Pressure		Pa 20	80	80	80	80	80	80
	Net Dimension (W*H*D)		mm 700x450x200	890x735x290	890x735x290	890x735x290	890x735x290	1250x735x290	1250x735x320
	Packing Dimension (W*H*D)		mm 1005x560x275	1070x800x360	1070x800x360	1070x800x360	1070x800x360	1430x800x360	1430x800x390
	Net/Gross Weight		kg 18.0/21.0	32.0/37.0	33.0/38.0	35.0/39.0	35.0/39.0	45.0/51.0	50.0/56.0
Outdoor Unit	Noise Level		dB(A) 53	55	57	60	60	60	60
	Dimension (WxDxH)	Net	mm 730x285x545	800x315x545	825x310x655	970x395x805	970x395x805	940x370x1325	940x370x1325
		Packing	mm 850x370x620	920x400x620	945x435x725	1105x495x890	1105x495x890	1080x430x1440	1080x430x1440
Weight		kg 28/32	42/45	53/56	65/75	65/75	95/105	99/109	
Refrigerant Type			R410A/750	R410A/1250	R410A/1750	R410A/2200	R410A/2150	R410A/3000	R410A/3000
Refrigerant Pipe	Liquid Side		inch 1/4"	1/4"	3/8"	3/8"	3/8"	3/8"	3/8"
	Gas Side		inch 1/2"	1/2"	5/8"	5/8"	5/8"	3/4"	3/4"
	Max. Length		m 15	20	20	30	30	50	50
	Max. Height		m 10	15	15	20	20	30	30

Indoor Dimension										
Model	Outdoor Dimension(mm)				Air Outlet size		Air Return size		Size of Mounting Lugs	
	A	B	C	D	E	F	G	H	I	J
JASA-Hi-H12A4/R	700	200	450	434	110	532	117	534	750	412
JASA-Hi-H18A4/R	890	290	735	705	202	652	250	810	927	510
JASA-Hi-H24A4/R	890	290	735	705	202	652	250	810	927	510
JASA-Hi-H36A4/R	890	290	735	705	202	652	250	810	927	510
JASA-Hi-H36A5/R	890	290	735	705	202	652	250	810	927	510
JASA-Hi-H48A5/R	1250	290	735	705	183	967	250	1175	1287	510
JASA-Hi-H60A5/R	1250	290	735	705	183	967	250	1175	1287	510

Outdoor Dimension				
Model	W1(W2)xHxD(mm)	Packing Dimension(mm)	A(mm)	B(mm)
JASA-H12A4/R	730(780)x285x545	850x370x620	540	285
JASA-H18A4/R	800(860)x315x545	920x400x620	545	315
JASA-H24A4/R	825(893)x310x655	945x435x725	540	335
JASA-H36A4/R	970(1044)x395x805	1105x495x890	675	409
JASA-H36A5/R	970(1044)x395x805	1105x495x890	675	409
JASA-H48A5/R	940(1010)x370x1325	1080x430x1440	625	364
JASA-H60A5/R	940(1010)x370x1325	1080x430x1440	625	364